



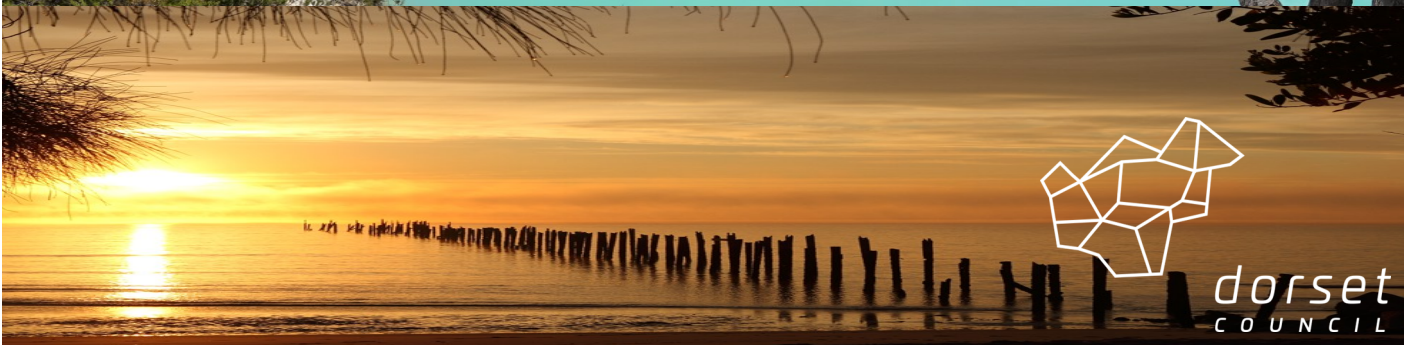
Endorsed by Council

20 April 2026

Minute 81/2026

PRIORITY PROJECTS

Dorset



dorset
COUNCIL

PRIORITY PROJECTS



Dorset Council is seeking investment partners to deliver on key infrastructure and community development projects that will deliver transformational changes to the economic, social and physical climate of north eastern Tasmania.

Investment in these projects will ensure that the north east of Tasmania continues to experience sustainable growth and development and will ensure a thriving future for the region.

The Dorset Council Priority Projects plan has been developed with a coordinated approach to align with local, regional, state and federal plans. The plan takes a Council-wide view of needs and opportunities while aligning closely with the four identified 2023-2032 Strategic Plan focus areas (pillars). The plan will be reviewed every 6 months . The Priority Projects plan will be used to apply for funding, leverage support and provide a starting point for regional collaborations.

STRATEGIC FOCUS AREAS:



LIVEABLE COMMUNITIES



ECONOMIC DEVELOPMENT



LEADERSHIP AND GOVERNANCE



ENVIRONMENTAL FOOTPRINT

CURRENT ADVOCACY AREAS:

Dorset Council advocates on behalf of residents and ratepayers on numerous issues and opportunities that support the strategic focus areas of the municipality. This advocacy is generally for areas that fall outside of local government responsibility but that impact significantly on the community.

Advocacy may involve the promotion of a project to gain support from decision makers, informing policymakers on local community issues and ensuring local voices are heard, and/or assisting with the securing of resources.

#1: COMMUNITY HEALTH AND WELLBEING

Support Health Consumers Tasmania via advocacy for:

- *Community Health Needs – Gap Analysis*
- *Continued funding to ensure a stable and sustainable Health Hub*

#2: SIDELING/EASTERN BYPASS

Continue to support and advocate for the upgrade of the Tasman Highway from Minstone Road through Corkery's Road to be upgraded to B Double Standard and lobby the Federal and State Government for further funding to upgrade the current Tasman Highway 'Sideling' to B Double Standard if the Corkery's Road option is deemed unfeasible.

Lobby the State Government to investigate alternative project delivery options to ensure value is attained.

Work with City of Launceston to advocate in partnership for an eastern bypass to divert Tasman Highway heavy vehicle traffic away from the city.

Advocate for further funding for the project.



PRIORITY PROJECTS—Snapshot



GAMECHANGERS:

Funding Sought



#1: NORTHERN ROADS INITIATIVE (Golconda Road)

Regional priority project: Key transportation link for Dorset.

\$24M

Partnerships: City of Launceston, George Town Council, Agriculture and Forestry Industries



#2: CITY TO THE SEA (including North East Rail Trail Stage 3)

Regional priority project: Encourage active lifestyles, connect communities, promotion of our natural environment and development of world class trail network.

\$6.54M

Partnerships: City of Launceston, Break O’Day Council, Tourism Industry

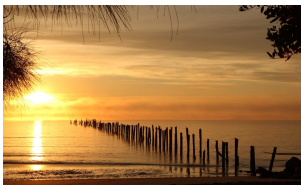


#3: DORSET: FUTURE READY

Regional priority project (Derby) Master planning of key services and infrastructure across Dorset

\$1.17M

Partnerships: North East Tasmania Chamber of Commerce, Service Clubs, Community Organisations



#4: BRIDPORT PLAY CENTRE

Redevelopment of the Bridport Play Centre (child and youth focused facility)

\$500K

Partnerships: Bridport Girl Guides, Bridport Playgroup



#5: BRIDPORT NEW RIVER ENTRANCE

Design and construction work on the new port/river entrance.

\$TBA

Partnerships: Internal



#6: VICTORIA STREET PUBLIC TOILET

Public toilet planning and construction at the Victoria Street end of Scottsdale

\$TBC

Partnerships: North East Tasmania Chamber of Commerce

PRIORITY PROJECTS



The Priority Projects plan includes key regional ‘Gamechangers’. These are projects which have the potential to have a significant positive impact across the municipality, and, in some instances, across the region. These projects are once in a lifetime opportunities to impart transformational change and drive investment across the region.



PRIORITY PROJECT #1

Northern Roads Initiative

\$24M

Golconda Rd

KEY STRATEGIC INFRASTRUCTURE CORRIDOR FOR DORSET

Golconda Road is a key strategic transport link for freight and the agriculture and forestry industries. It provides a vital connection for logistics, workforce mobility, and supply chains between Scottsdale, Bell Bay and Launceston.

Golconda Road has the highest traffic volumes of all Council rural roads. It is the main access for tourists visiting Bridestowe Lavender Farm (55,000 visitors/year) plus increasing usage

from heavy vehicles.

Current focus areas:

1. *Pavement Rehabilitation—1km east of Denison River to Little Forester River—8km—\$6.4M*
2. *Pavement Rehabilitation, Widening and Safety Upgrade—North Blumont Road —8.2km—\$13.12M*
3. *Replacement of the Brid River Bridge— \$850k*

FUNDING SOUGHT

Total cost of a holistic treatment on the road in its entirety is estimated at \$24M.

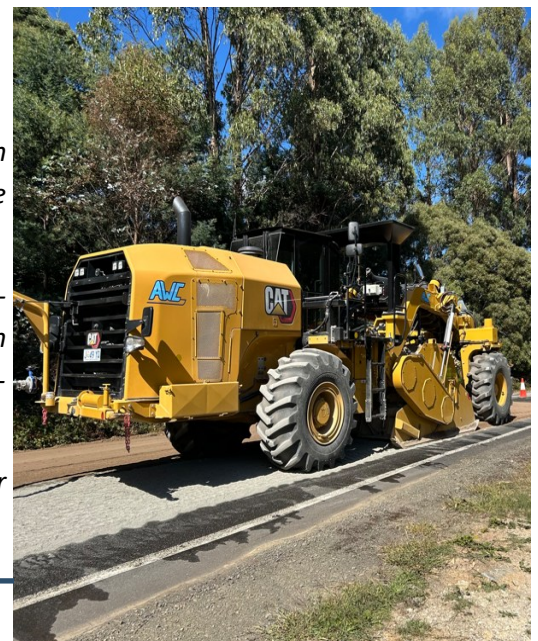


Image: Roadworks

REGIONAL GAMECHANGER

Partnerships: City of Launceston, George Town Council, Agriculture and Forestry Industries

PRIORITY PROJECT #2



City to the Sea

TBA

INVESTING IN THE COMMUNITY

City to the Sea will develop a regional multi use trail network connecting forest roads, rail trails, mountain bike networks and unsealed roads and tracks across the North East from the city (Launceston) to the sea (St Helens).

The project will include Stage 3 of the North East Rail Trail (NERT) with the redevelopment of 40km of disused rail corridor connecting Lilydale Falls to Scottsdale, adaptive reuse of the former Scottsdale Railway Station, development of the Scottsdale Railway Precinct and the scoping and preliminary planning associated with proposed connecting trails linking the North East Rail Trail at

Tulendeena with Legerwood and Branxholm.

The Northern Tasmania Development Corporation has listed the NERT as a project of regional significance and Dorset Council is actively working with neighbouring councils to progress the project.

Current focus areas:

1. NERT Stage 3—\$5.14M
2. NERT Additional components (interpretive signage, art installs, rest shelters etc) - \$1.4M
3. Scottsdale Railway Station and Precinct - \$TBA
4. Connecting trails (Legerwood and Branxholm)

FUNDING SOUGHT

Partnerships: City of Launceston, Break O’Day Council, Tourism Industry



Image: View from the rail corridor at Blumont

The NERT is estimated at \$6.54M

REGIONAL GAMECHANGER

PRIORITY PROJECT #3

Dorset: Future Ready

\$1.17M

INVESTING IN THE COMMUNITY

A holistic strategic planning project incorporating a key focus on live, work and play elements across Dorset. The overarching project will focus on enhancing community liveability, driving economic growth, and reinvigorating the north east region and will be delivered through development and implementation of a series of key interconnected plans.

Initial focus will be on the key growth areas of Scottsdale, Bridport and Derby with other towns included as the project progresses.

Current focus areas:

1. Scottsdale and Bridport master planning—\$620k
2. Derby master planning—\$552K

FUNDING SOUGHT

Scottsdale and Bridport—\$620k
Derby—\$552k

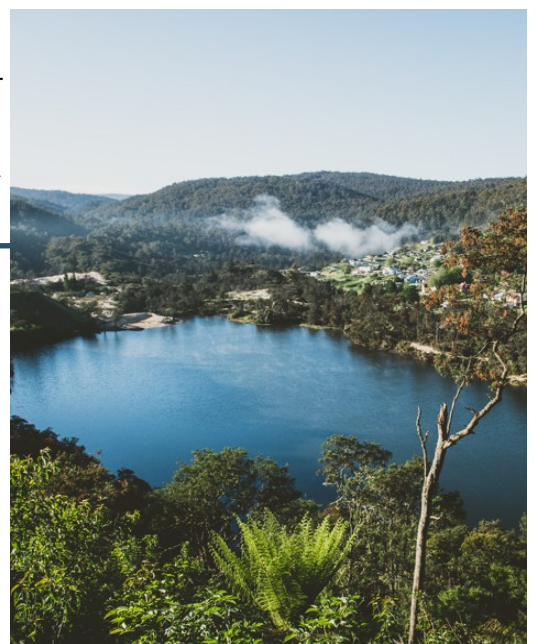


Image: Briseis Hole, Derby

REGIONAL GAMECHANGER

Partnerships: North East Tasmania Chamber of Commerce, Service Clubs, Community Organisations

PRIORITY PROJECT #4

Bridport Play Centre

\$500K

INVESTING IN YOUNG PEOPLE AND FAMILIES

The Bridport Play Centre is one of the only facilities in Dorset dedicated to children, young people and their families. The building was originally an old railway house from Derby that was transported to site in 1974. Today the timber/fibro split level building is home to the Bridport Girl Guides and the Bridport Playgroup as well as a local tutoring service.

Due to its age, lack of accessibility, and layout the building is in need of

major redevelopment in order to ensure it continues to meet the needs of the community now and into the future. It is anticipated that due to the significant works required that the most value for money option will be to remove or demolish the existing building and construct new.

FUNDING SOUGHT

The cost is estimated at \$500,000

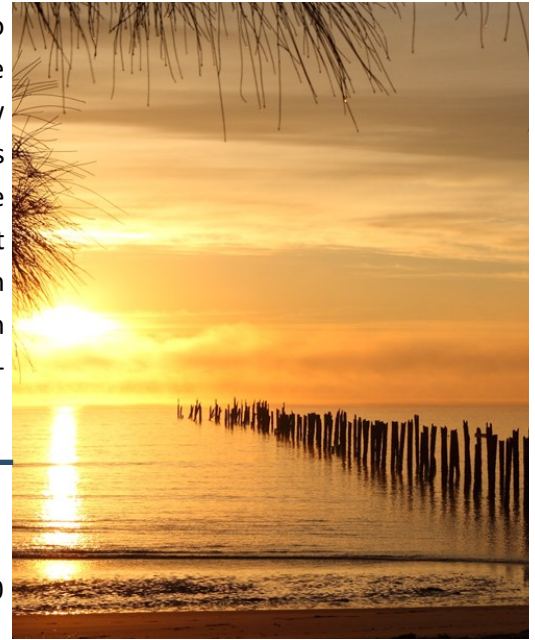


Image: Old Pier, Bridport

Partnerships: Bridport Girl Guides, Bridport Playgroup

PRIORITY PROJECT #5

Bridport New River Entrance

\$TBA

SUPPORTING INDUSTRY

A state government election commitment of \$600,000 will assist Council in conducting design and construction work on the proposed new port entrance

Further funding will be required for construction.

FUNDING SOUGHT

The cost is to be determined.



Image: Bridport wharf

Partnerships: MAST, State Government, industry

Victoria Street Public Toilet

\$TBA

COMMUNITY AMENITY

Site assessment and planning and development for a public toilet at the Victoria Street end of Scottsdale

FUNDING SOUGHT

The cost is estimated at \$TBA.

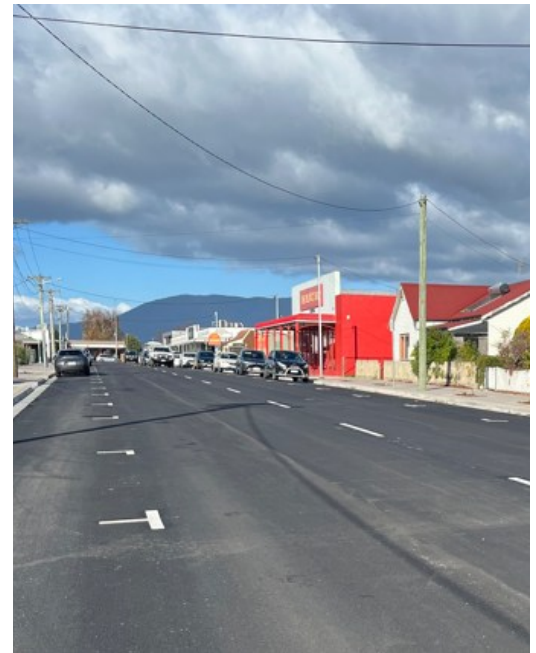


Image: Victoria Street

Partnerships: North East Tasmania Chamber of Commerce



PRIORITY PROJECTS: Dorset

DOCUMENT CONTROL: DOC/25/11999

VERSION	NOTES	DATE
1.0	Document Creation	October 2025
2.0	Document Update	April 2026

Mayor Rhys Beattie

councillorbeattie@dorset.tas.gov.au

0409 921 683

General Manager: John Marik

gm@dorset.tas.gov.au

(03) 6352 6500

3 Ellenor Street / PO Box 21, Scottsdale 7260 TAS

www.dorset.tas.gov.au



dorset
COUNCIL